

# JAMES CHAMBURY

## COLOUR, LIGHT & SHADE

Louise and Nicola Chambury

James Chambury (1927–1994) was born in the East End of London, one of his mother's thirteen surviving children. Mired in the poverty of the Great Depression the family disintegrated, with brothers and sisters being separated, some never to meet again. Discouraged from thoughts of anything other than manual work, James's obvious artistic skill was greeted not with encouragement but with disapproval by both family and teachers.

Later, bombed out of their London home, the family moved to Essex and in 1943 James, aged 16, was taken on as a messenger for *The People* newspaper in Fleet Street. Recognising his talent from sketches he'd seen, his boss encouraged James to attend evening classes at the Central School of Arts and Crafts. In the 1950s, after a brief spell in the RAF and by now working as a commercial artist, James married and started his own family.

Continually driven by a desire to paint, in 1967 James gave up his commercial work and moved his family to Essex. Gradually he found his voice and his audience as an artist, drawing and painting all aspects of the Essex and later the Suffolk and Norfolk coastline, as well as the inland scenery of East Anglia and beyond. All of his pictures show his concern with the effects of light on the landscape.

For the remainder of his life James continued to develop as an artist, enjoying considerable success both at exhibitions and through commissioned works. This book, lovingly compiled by his daughters, reflects the long years of struggle through which this important artist triumphantly emerged into the light.

### ART IN EAST ANGLIA

*Colour, Light & Shade* is one of a series of art books published by Halstar, part of the Halsgrove Group, in association with Picturecraft Gallery, Holt, Norfolk. Each book portrays the life and work of artists who have long associations with East Anglia and whose paintings have been part of major exhibitions at the gallery.

Other titles include:

*Tony Garner's Enchanted Light*

*Bryan Ryder ROI: Painting*

*Atmospheric Landscapes*

*Felix Bernasconi: Norfolk's Hidden Landscapes*

*Horace Tuck: Norfolk's Lost Landscapes*

*June & Alwyn Crawshaw*

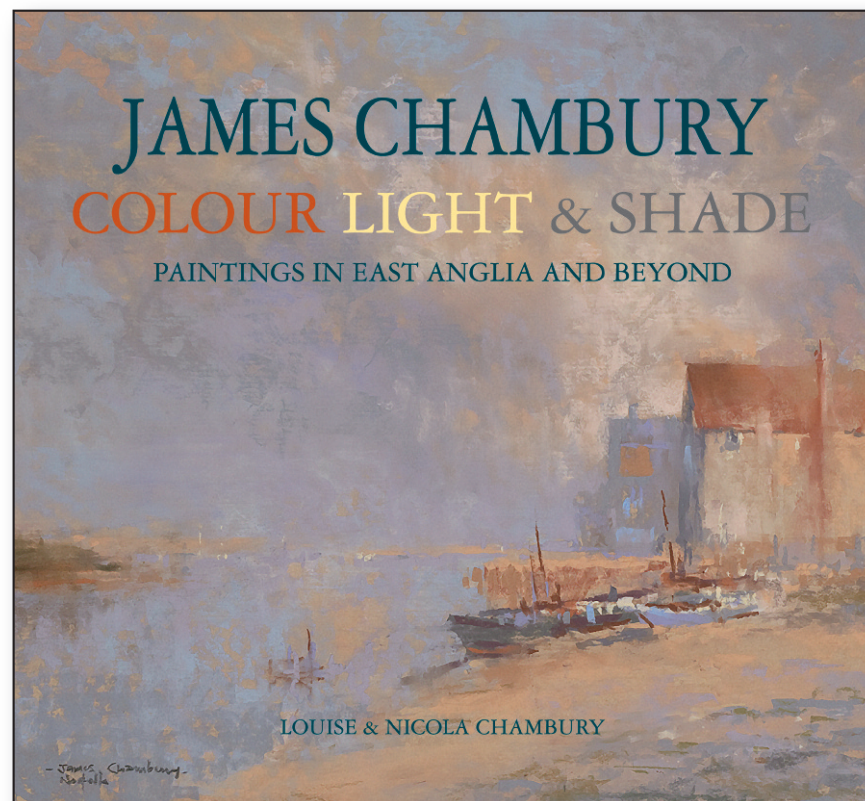
*James Wright's East Anglia*

### HALSGROVE CATALOGUE

The full Halsgrove catalogue is available free or visit [www.halsgrove.com](http://www.halsgrove.com) for regional and category listings of available titles.

Halsgrove Publishing  
Halsgrove House,  
Ryelands Business Park,  
Bagley Road, Wellington,  
Somerset TA21 9PZ  
Tel: 01823 653777  
Fax: 01823 216796  
[www.halsgrove.com](http://www.halsgrove.com)  
e-mail: [sales@halsgrove.com](mailto:sales@halsgrove.com)

## HALSGROVE TITLE INFORMATION



**Format:** Hardback, 144 pages, 238x258mm, including over 130 illustrations

**Price:** £24.99

**ISBN:** 978 1 906690 35 9

**Imprint:** Halstar

**Published:** November 2011



**Great Books from  
your Local Bookseller**



# JAMES CHAMBURY

COLOUR, LIGHT & SHADE



Remainder at close quarter Pin Mill Barge Race.  
Pastel 60x46cm



The Dog Otter.  
Watercolour



Boatmen on the Beach at Aldeburgh  
Oil



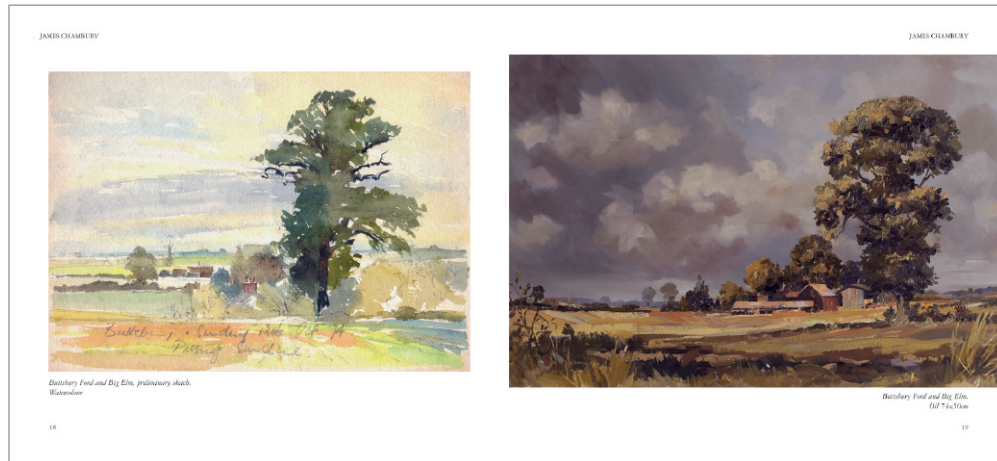
James sketching in Norfolk, 1985.



Mist and Reeds, River Brett, Hadleigh, Suffolk.  
Pastel 33x23cm



Opposite: Scene near Borrowdale.  
Pastel 57x41cm



Example of a double-page spread.